

HELP US BY SAVING YOUR:

Used Postage Stamps – for Leprosy Relief

Campbell's Soup Labels – for Education Programs

Zehrs Cash Register Tapes – to convert to cash

Aluminum Cans – to Habitat for Humanity

All of the above can be placed in the appropriate slots in the container at the Welcome Centre and 'rinsed out' Aluminum Cans placed in the appropriate holder in the Church Hall



The Sacrament of Holy Communion will be held at St. Andrew's on the first Sunday of March, June, October and December.

The **'INSPIRE'** is a monthly communication resource of:

ST. ANDREW'S PRESBYTERIAN CHURCH

161 Norfolk Street, Guelph, ON N1H 4J8

phone. 519.822.4772 fax. 519.822.3525

mailbox@standrewsguelph.com

www.standrewsguelph.com

Pastoral Staff

Rev. John Borthwick

revjohn@standrewsguelph.com

The Rev. Dr. Robert Spencer

Minister in Association

Matt Foxall

Director of Youth Ministry

Jenny Emerson

Church School Team Leader

Barbara Molengraaf

Knox Placement Student

Fred Gingrich

Director of Music

Margaret Blatherwick

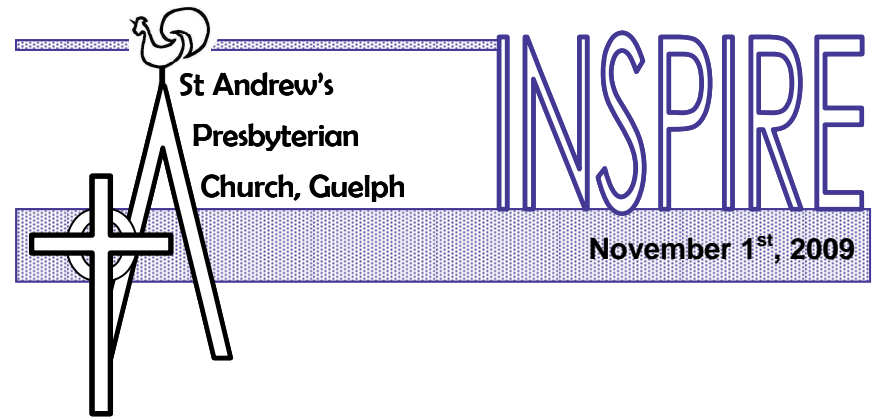
Administrative Assistant

Ross Rowat

Clerk of Session

Sunday Services

10:30 a.m.



What a Fantastic Congregation You Are!

What a month we have had together. I want to thank you so much for your generous support of the Presbytery's One Campaign for PWS&D Afghanistan. Your contributions to the cause were overwhelming and I can say for certain that you have made your mark among the Presbyterian churches in our Presbytery. Not only did we 'beat' our challengers financially but we also showed up in significant numbers to the event. Thanks again, I'm so proud and honoured to be able to say that St. Andrew's is 'a place to call home.' And you know... I think I am having more fun since the colour change.

We are also in the final stretch towards completing 'My Neighbour's House', our 2009 Habitat for Humanity Multi-Faith Build. This project has been the culmination of countless hours of work by so many people in our city and from various faith groups. Our own 'Builders', Pauline Sanderson, Nicki Groenewegen, Neal and Nora Stoskopf, Don Grainger, and Mary Visser Kerr have demonstrated steadfast commitment to our goal and I truly believe that we couldn't have done it without them. I would personally encourage you... one last time... to join us on November 5th for Habitat's 'Building a Dream' Celebration Dinner and Auction. It will be a night to remember! St. Andrew's can take pride as a community in knowing that St. Andrew's has provided 1/3 of the total support for My Neighbour's House over the last two years. Total figures will be available at year end but I believe again that our community deserves heartfelt thanks from me. Well done, St. Andrew's! Let's celebrate the difference that we are making in our community and world through God's inspiration and the Spirit's encouragement. To God be the glory!

John.

Opportunities



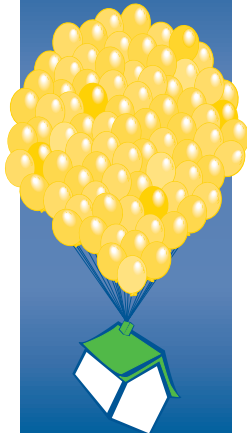
BUILDING *a Dream*

Sponsored by:



Inaugural Celebration

Thursday, Nov. 5, 2009
at Delta Guelph Hotel
and Conference Centre



*Building
partnerships for
our community's
families*

LAST CHANCE to be a part of “Building a Dream”

We invite you to attend the **1st Annual Celebration Dinner & Auction: “Building a Dream”** sponsored by Whirlpool Canada and in partnership with the Delta Guelph Hotel and various faith communities in our city to raise money for Habitat for Humanity Wellington County. It will be held at the Delta Guelph Hotel on the evening of **Thursday November 5th**. Tickets are **\$75/person** or a **table of 10 for \$700** and will be available in October at Delta Guelph or the Habitat Office on Speedvale. Members from St. Andrew’s have been working hard to make this evening a great success.

The Build on Johnston Street continues. They continue to seek volunteers. Much of the work is now indoors. If you are interested in volunteering, please call Habitat directly at 519.767.9752. Donations to My Neighbour’s House are still greatly appreciated (third line of your offering envelope or cheques to St. Andrew’s Presbyterian Church with My Neighbour’s House in the memo line).

There are over 700 families in Guelph alone that could benefit from Habitat for Humanity’s home ownership solution to affordable housing. Please be a part of the success stories that we create by building and renovating homes so that families can live in safe and affordable housing.

Suite 300, 104 Dawson Road, Guelph, ON N1H 1A7 · Phone: 519-767-9752 · Fax: 519-767-9096
info@habitatwellington.on.ca · www.habitatwellington.on.ca

News and Events

Presbytery Visitation TODAY!

A visitation team from the Presbytery of Waterloo Wellington is conducting a regular visit of our congregation today. These visits occur so that the Presbytery may fulfill its duty to congregations to offer pastoral oversight of its ministers and people. The visitation team will prepare a report based on their visit for presentation to the Session and with the agreement of the Session will pass that report on to the Presbytery for its approval. Please welcome the visitation team of The Rev. Mark Gedcke, Aileen Issac, and Brant Smith from Calvin Presbyterian Church in Kitchener.

Passionate Spirituality Workshop with Christian Schwarz

On Friday November 13th, Christian Schwarz, the founder of NCD will be in Toronto presenting a workshop on his new book, Passionate Spirituality: Connecting with God. This event is worth your time as 40% of our congregations are currently identifying Passionate Spirituality as their area of greatest challenge including St. Andrew’s. Our own Dr. Bob is planning on attending and would be happy to carpool with anyone who is interested in attending as well.

The day long event costs \$50 which includes lunch and a copy of the book. If interested, please register on-line at: <http://www.ncdcanada.com/christian-schwarz.htm>

Commissioning Service for Margaret Evans

Sunday November 22nd @ 3PM at St. Andrew’s, Guelph

It is with great joy that we have an opportunity to celebrate with our own, Margaret Evans as she begins a new chapter of her life. She has been appointed by the Life and Mission Agency of The Presbyterian Church in Canada as a Volunteer Missionary who will serve at the Shauri Yako Community Youth Support Centre in Nyeri, Kenya. Her term of service will run from November 1, 2009 to February 28, 2011 with the month of November 2009 being spent in Canada for an orientation at the PCC national office in Toronto. We hope that you can join us as we celebrate Margaret’s appointment in a service of worship on November 22nd. Congrats Margaret! Our prayers and well wishes go with you on your journey.

Christmas Crèche Display

St. Andrew's will be hosting a Christmas Crèche Display on Saturday, November 28th and Sunday, November 29th, 2009. I need your help to make this event a success.

Please consider:

- Lending your Christmas Crèche for the display
- Helping with set-up on Friday, November 27th
- Baking cookies, muffins or squares for the day of the event
- Helping at the event on Saturday, November 28th and/or Sunday, November 29th

If you are able to help in any way please contact Jennifer Marett at (519) 836-5484 or by email at jmarett@rogers.com.

Yours in Christ's service, Jennifer Marett



Leading with Care – Our Denominational Policy

The Leading With Care Policy is a policy that was implemented by the Presbyterian Church of Canada in the last few years to try to ensure that the highest quality of ministry was being offered while making sure that the worst doesn't happen. Commitment to this policy will prevent abuse, neglect and harm from arising to children, youth, and vulnerable adults by having good processes in place; protect spiritually, ethically and legally the vulnerable in our midst; reporting incidents of abuse, neglect and harm immediately wherever, whenever they are encountered; and finally, by training and supporting our teachers and leaders so that we may improve on this process, teachers are well trained and equipped for their ministry tasks. A copy of the Leading With Care policy can be found in the library for further information.

Nancy Nicol, Leading with Care Committee

St. Andrew's Mission Focus for 2009-10

Play – Mamow Sha-way-gi-kay-win/The North-South Partnership for Children



is a developing partnership that represents the coming together of First Nation Chiefs, Elders, youth and community members living in remote communities in northwestern Ontario and caring individuals and voluntary organizations based in southern Ontario. The Partnership was formed in 2006 to improve the quality of life of children and youth in remote First Nations communities, by building a larger circle of caring for the children and their families. One of our local Presbyterian congregations, Duff's

Presbyterian is in relationship with the Partnership. At a Breakfast @ St. Andrew's presentation this spring, members of Duff's told of their experience with the Partnership and how one could be a part of this relationship. We have partnered with Duff's in providing financial resources and willing volunteers who would be willing to be a part of a trip/project to supply the community of Mishkeegogamang First Nation with six (6) freighter style canoes along with lifejackets, paddles and fishing nets. These canoes will be used in family based programs, programs for children struggling in school, and in programming designed to enhance wilderness skills among young people. The benefit of the canoes to the community would be significant. Activities for young people are limited – sports and leisure programs that we enjoy in the south and take as the norm are not available to communities in the north. The canoes would present an activity designed to develop relationships as well as learn some traditional skills. The children of the North need a place to play and learn. As we move to **PLAY** in our three-fold Mission focus this year, our goal is approximately **\$5,000.00** for this project. Donations can be made to St. Andrew's on the 3rd line of your offering envelopes indicating North-South Partnership Canoes. If we can create enough support and interest in this project it is possible that



PWS&D will partner with North-South Partnership for Children as well. Advocacy and bridge building has been on-going for some time now. We look forward to your generous support to this project. Let's get 'our paddles' in the water!

Old Residence Blankets make a difference

The following letter was sent to Housekeeping at the University of Guelph after their donation of blankets to St. Andrew's:

September 3, 2009

Dear Housekeeping staff, U of G

Thank you for your generous donation of blankets to St. Andrew's Presbyterian Church, Guelph. Many organizations benefited from your generosity.

Including: In Guelph:

- Sister Christine
- Salvation Army
- Onward Willow
- A Mission that supplies an orphanage in Haiti and Nicaragua. (The blankets are to be cut and sewn into smaller sizes).

In Kitchener:

- Mary's Place: a shelter for abused women and children
- House of Friendship: a street mission
- St. Andrew's Presbyterian Church, out of the cold program

Beyond:

- Two van loads are being driven to an Indian reserve in Northern Ontario.
- One van load was split between Evangel Hall, a Toronto street mission and an Oakville church for street mission.
- Crieff Hills Community took the remainder. They have an upcoming conference in Oct for charities that work with the homeless and poor. Participants will be able to take blankets back to their home bases.

The orphanage mission said that they would have taken any ripped or blankets with holes as they could have used parts of blankets. Every one of the above charities was immensely grateful for their van/car load of blankets and expressed the ongoing need for more if the opportunity arises again.

Thanks for your thoughtfulness in supporting so many different and needy charities.
Mary Rife

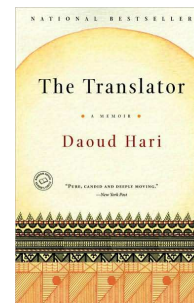
Committees and Groups



Welcome to The Bible Trail 2.0 – The Gospels

Beginning on Thursday November 19th, we will be beginning a new journey on The Bible Trail. The Bible Trail 2.0 – The Gospels will take us through the Gospels over a period of three years. We will be using the Church Year as our guide along the Trail so that we might relive the Gospel drama through the eyes of each of the writers. Join us for our first "Trail Party" on November 19th at 10:00AM in the Parlour as we discuss the Gospel birth narratives in preparation for the seasons of Advent and Christmas. Our special thanks to TMS Graphics of Guelph for our 'edgy' new logo. Hope to see you on the Trail.

Friday Brown Bag... & Good Food, Good Book and Good Nite



THE TRANSLATOR by Daoud Hari

On **Friday November 20th**, our book clubs continue at their usual times. **The Brown Bag** starts at **12:15pm** in the Parlour and all you are required to bring is yourself and a bag lunch. Rev. John provides the engaging conversation.

Good Food, Good Book, and Good Nite begins at **6:30pm** in the Parlour. Seating is limited and reservations are necessary. Dinner is provided at cost. There is always a space available for newcomers. As with FBB, reading the book is not a requirement. Rev. John offers leadership at this group too. Please reserve your spot at the table by calling the Church Office (519.822.4772) or for more information, contact Rev. John.

Breakfast @ St. Andrew's

You are welcome to **Breakfast @ St. Andrew's**, an inclusive breakfast program for all ages, genders, and people. Breakfast will be served at 8:30am in the Church Hall. Our guest speakers will begin just after 9:00am and we try to conclude around 10:15am. The cost for a catered traditional breakfast is \$8/person. Suggestions for topics or guest speakers are always welcome. Please contact Rev. John if you know of someone or would like to suggest a topic for discussion. Won't you join us and bring a friend too.



On Saturday **November 21st**, we will have our own Clara M. Marett talk to us about "Impressions of Ancient and Modern Israel and Jordan"

Her Bio: Clara M. Marett celebrated her 50th anniversary with her husband John this past summer. She and John have two sons Jay and Dean. Clara has a BA from Queen's and a MA from the University of Guelph. She served on Guelph City Council for 15 years (1976 – 1990). She taught high school and has lectured at the University of Guelph and Conestoga College. She was a financial advisor for 23 years. Her interests include: travelling, playing bridge, reading and hiking.

Youth Ministry Update

The second annual fall Youth Retreat took place at Crieff Hills Community and Conference Centre on October 2-4, where our youth studied the book of Ecclesiastes, played countless wild and wacky games, and ate a ton of food. 11 teens and 3 leaders returned from this brisk weekend getaway a little tired but incredibly motivated and inspired. And it's not over yet! Stay tuned for more information about a spring Youth Retreat in March.

In other news, our new Youth Drop In program reached a record high this month when FOURTEEN young people, the majority 'new faces' from our community, came out for fellowship and fun. Please continue to pray for the many ministries St. Andrew's offers to reach out to Guelph's young people.

Check out what November has in store for Youth Ministry.

Youth Drop In: November 3 & 24

On Tuesday, November 3rd the youth will introduce its newest addition to the youth room: Beatles Rock Band. Have the opportunity to play this unique game and have fun with all your friends. The fun starts immediately following school and goes till 7pm. There will be snacks provided. On Tuesday, November 24th the youth will have the opportunity to see the new Star Trek movie on the big screen up in the youth room. Dinner will be provided.

Storm Box Night: November 6th

On Friday, November 6th the youth will have the opportunity to check out the Guelph Storm in the comfort of a luxury suite (thanks to Bob Ireland and his business partners!). We will meet at the church at 6pm for pizza and then head over to the game. Tickets are limited so you must RSVP and receive confirmation that you can go. Preference will be given to those who regularly attend youth.

Food Drive: November 1 – December 11

The youth have partnered with the Guelph Food Bank to run a food drive to aid people in Guelph who need assistance with the basic necessities of life holiday season. Close to 15,000 people used the Guelph food bank in 2008 – a 10% increase from the year before. The youth have set a goal to raise 5000 cans of food by December 11th, which they will personally deliver to the food bank. If they reach their goal Matt has agreed to allow the youth to shave his head. (Psst... if they can double the goal and raise 10,000 cans, Matt will shave off his goatee, which he hasn't done in almost a decade!). Donations can be dropped off at the church anytime in one of our food bank bins.

Youth Name and Logo Contest

Our Youth Ministry needs a name and a logo and YOU can help us out! Submissions are due Friday, November 13th. There will be a prize for the individual whose name and logo are chosen.

Thanks again for your prayers and support.

In Christ, Matt Foxall, Director of Youth Ministry



Check out how much fun you could be having
in youth ministry.

Pictured here are the youth out at Crieff
getting ready to devour
the 10 foot Ice Cream Trough Sundae.